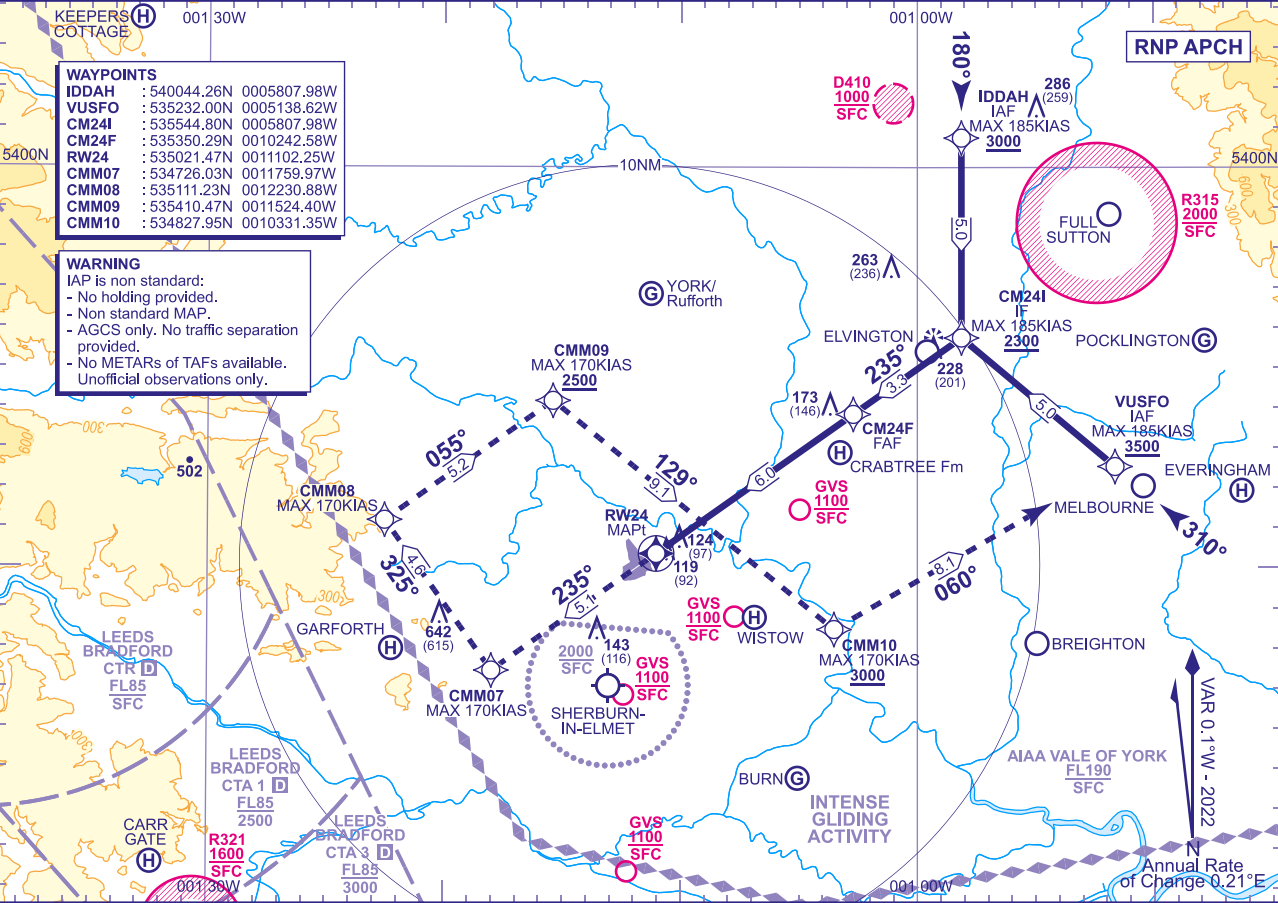


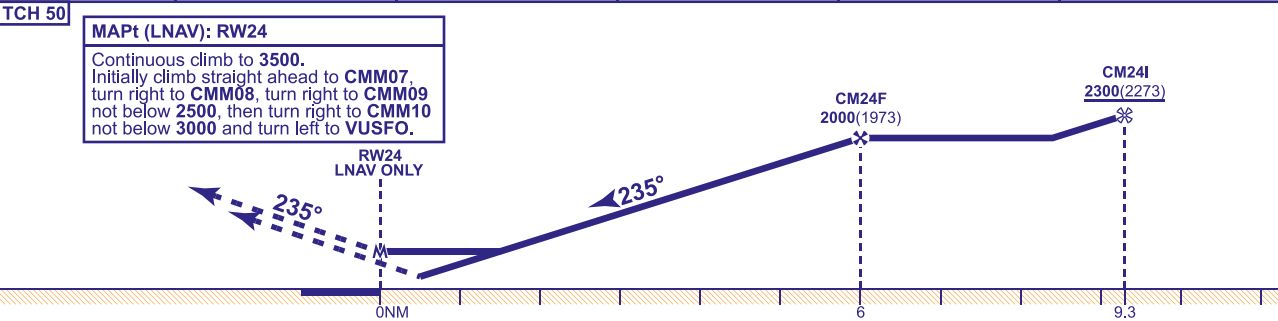
INSTRUMENT APPROACH CHART - ICAO

LEEDS EAST
RNP
RWY 24
(ACFT CAT A,B,C)

 MSA 25NM ARP	 MSA 15NM ARP	A/G 120.710	FENTON RADIO	AD ELEVATION 29	RNP RWY 24 (ACFT CAT A,B,C) MIN TEMP -10C TRANSITION ALTITUDE 3000
				THR ELEVATION 27	
				OBSTACLE ELEVATION 642 AMSL (615) (ABOVE THR)	
				BEARINGS ARE MAGNETIC	



RECOMMENDED PROFILE VNAV - VERTICAL PATH ANGLE 3.0° (LNAV 5.24%), 318FT/NM					
NM to RW24	6	5	4	3	2
ALT(HGT)	1990(1963)	1670(1643)	1350(1323)	1030(1003)	710(683)



Aircraft Category		A	B	C	Rate of descent FT/MIN	G/S KT	160	140	120	100	80
OCA (OCH)	LNAV	530(503)	530(503)	630(603)		850	740	640	530	420	
	LNAV/VNAV	530(503)	530(503)	630(603)							
VM(C)OCA (OCH AAL)		Total Area	540(511)	560(531)	710(681)						

NOTE 1 Temperature at which VPA exceeds 3.5° is >40°C.